

## Wetland Duck Wall Hanging



Merge designs; adjust density, resize and more when you create this duck wall hanging using EmbroideryWorks Advanced. You'll love having all of the editing tools you need right at your fingertips when using the Wetlands Ducks Design Collection from Amazing Designs.

**Skill Level:** Advanced

**Created by:** Diane Kron, Software and Embroidery Project Manager

## Supplies:

EmbroideryWorks Advanced from Designer's Gallery® for either Mac or PC  
Baby Lock® Valiant 10-Needle Embroidery Machine

Baby Lock sewing machine

Wetland Ducks Design Collection from Amazing Designs (ADP-99) or  
download the three individual designs SWNWD106, SWNWD112 and  
SWNWD121 from [www.amazingdesigns.com](http://www.amazingdesigns.com)

1 Yd. off white tone on tone cotton fabric for center and backing

1 Yd. burnt orange cotton fabric sashing and binding

½ Yd. brown leaf print

Madeira® embroidery threads

Baby Lock® Tear-Away stabilizer

Temporary spray adhesive

Finished size: 25½" x 25½"

## Instructions


### At the Computer:

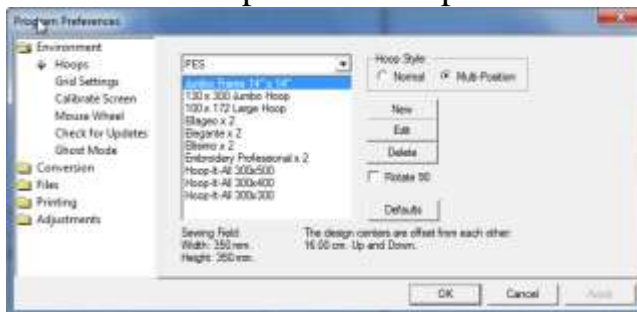
In this project, we will focus on using the EmbroideryWorks Advanced Mac version of the software. Since both versions of the program have the same look, anyone using the PC version can also follow these directions.




1. Open the program by clicking on the EmbroideryWorks icon on the desktop.

2. To set up the workspace follow the next set of steps:

- Click on the Preferences icon .
- Under Hoop Style, select Multi-Position.
- Select the Jumbo Frame 14" x 14". (See the following illustration for the settings.)
- Click OK to place the hoop on the workspace.



3. Click on Merge Stitch Files icon  on the top toolbar. Go to the file where the designs have been saved. Select design number



SWNWD106 and place it on the workspace. To resize the design, click on the resize handle and drag outward so that the size is 211mm x 233mm. The size will be shown in the sizing tool bar (as

<input checked="" type="radio"/> mm	↔	211.28	175.4%
<input type="radio"/> inch	↕	233.18	175.4%

shown below in the illustration).

Place this design in the top right area of the hoop.

4. Click on Merge Stitch Files and select design number SWNWD121.



Resize this design to 231mm x 157mm (as shown in the following illustration).

<input checked="" type="radio"/> mm	↔	231.92	162.0%
<input type="radio"/> inch	↕	157.25	162.0%

Place this design in the lower left corner overlapping slightly in front of the first design placed so that the green on the cattails is behind the log (as shown in the following illustration).





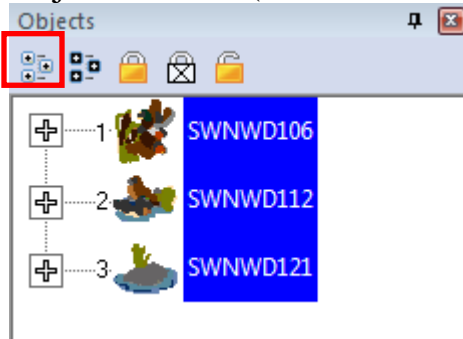
5. Select the last design listed (SWNWD121). SWMWD121.pes Resize this




design to 152mm x 116mm. Move this design to the lower right side of the hoop (as shown in the following illustration).





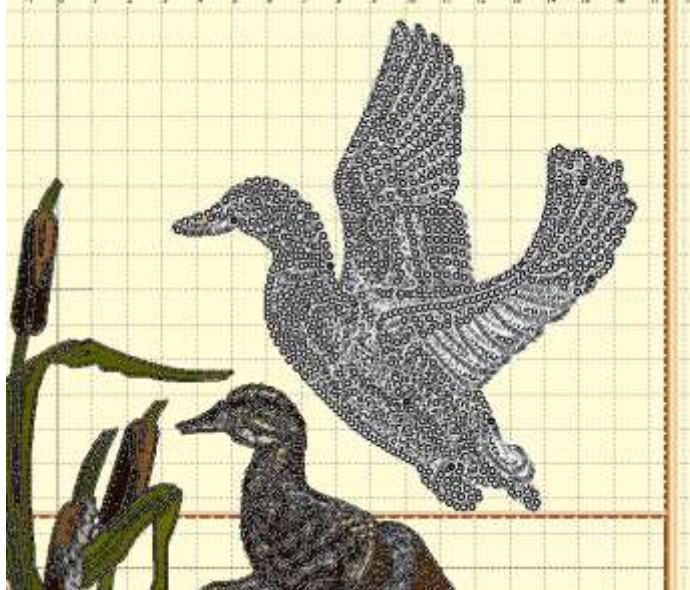
6. To adjust the density level on the designs and to remove any areas where the designs have overlapped, click the Select All icon under the Objects toolbar (as shown in the illustration below).



Click on the Sweeper  icon and the program will automatically remove any areas where density would be a problem. Please note that on the lower right side of the Status bar the stitch count is displayed. In the sample, the original count was approximately 86,309 Stitches:86309 Ndl/Col: 32/86 as shown and the density adjusted amount is approximately 80,396 Stitches:80396 Ndl/Col: 32/86 as shown.

7. To finish the center design, the duck in the top right will be cut away from the original design and then duplicated. Follow the next set of steps to edit the duck:

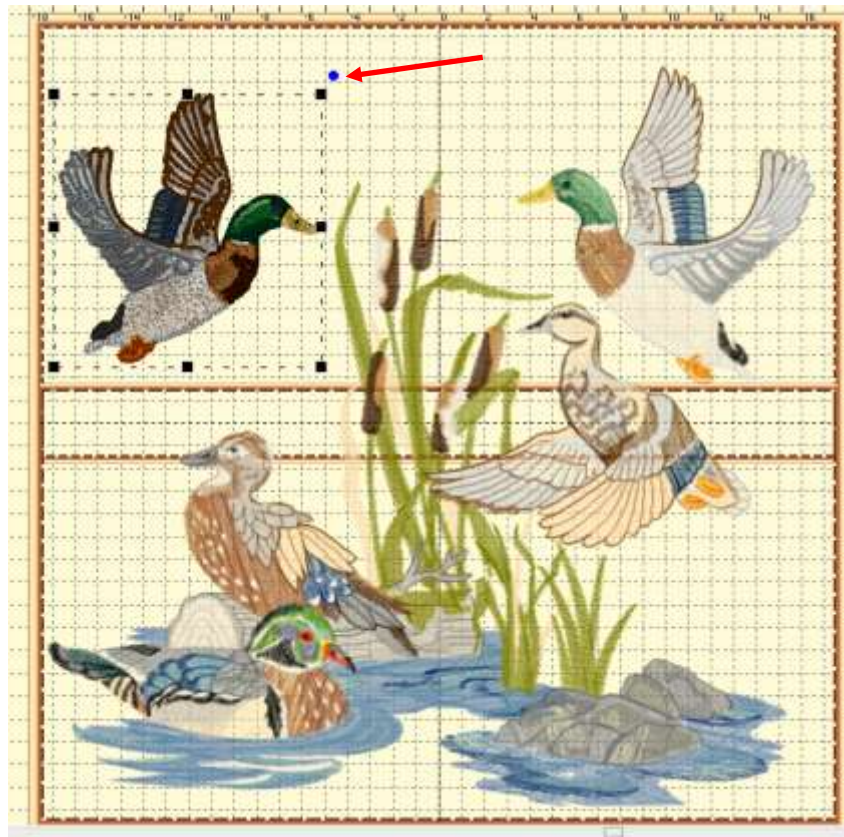
- Click on Stitch Edit Mode  icon on the top toolbar.
- Click on Free Hand Select .
- Drag a selection box around the flying duck.
- When the duck has been selected as shown below, Right click and choose Copy from the list of commands. Right Click again and choose Paste to duplicate the duck.



Refer to the following illustration to view the duplication.



- Left click on the duplicated duck and move the design to the upper left side of the hoop (*as shown below*).
- Decrease the size of the duck to fit in the area.



- Click on Flip Horizontally.
  - Rotate the duck as desired with the use of the blue dot outside of the selection handles (*as shown in the illustration above*). Slide the cursor over the dot and rotate as needed.
8. Click on File Save As (Stitch and Working File). The working file format is a (.be).
  9. To create the corner design, follow the next set of steps using the duplicated duck;
    - Select the single duck design.
    - Right click Copy.
    - Click on the New Page icon on the top toolbar.
    - Right click Paste.
    - Click on Preferences and select Normal.
    - Select the 130" x 180" hoop.
    - Resize this design to 75mm x 78mm.
  10. Click on File Save As. Give the design a name and save to a location of your choice.

### **At the Cutting Table:**

1. From the off white fabric, cut one piece that measures 21" square. It will be trimmed after embroidery to 17½" square.
2. From the burnt orange fabric, cut four strips across the width of the fabric that measure 1½" wide for the sashing and three - 2½" wide strips for the binding which will be pieced together to make one strip.

For the four corners, cut four - 6" squares. These squares will be cut down to 4½" squares after they have been embroidered.

3. From the brown leaf print, cut four – 1½" strips across the width of the fabric.

#### **At the Embroidery Machine:**

1. Using the 14" x 14" hoop, hoop the stabilizer and the off white 21" fabric square.
2. Turn the machine on and attach the "B" bracket. Set the machine up for multi-hoop embroidery and attach the hoop.
3. Retrieve the duck design. Select the top half of the design and place on the workspace.
4. Embroider this half of the design.
5. Follow the prompts after the first half has been embroidered through to selecting the second half of the design.
6. Embroider the second half of the design.
7. To embroider the four corners, set the machine up to use the 130mm x 180mm hoop.
8. Hoop the stabilizer in the 130mm x 180mm hoop and spray with the temporary spray adhesive. Place the burnt orange squares centered over the hoop and finger press smooth. Tip: If you do not have the spray adhesive, cut the burnt orange fabric squares large so that the fabric fits in the hoop. Embroider four duck squares with two of the duck squares flipped horizontally.
9. Cut the squares to 4½" while centering the duck in the middle of the square.

#### **At the Sewing Machine:**

1. Trim the embroidered center section to 17½" square with the design centered in the middle.
2. To create the sash strips, piece the burnt orange and two brown leaf print strips together with the burnt orange strip in the middle. Sew the strips together using a ¼" seam allowance along the long edge of the strip. Press all seams in the same directions.
3. Sew a sash strip to each side of the embroidered duck scene and then sew the duck embroidered sashing strips to the top and bottom edges. Trim as needed.
4. Quilt as desired.